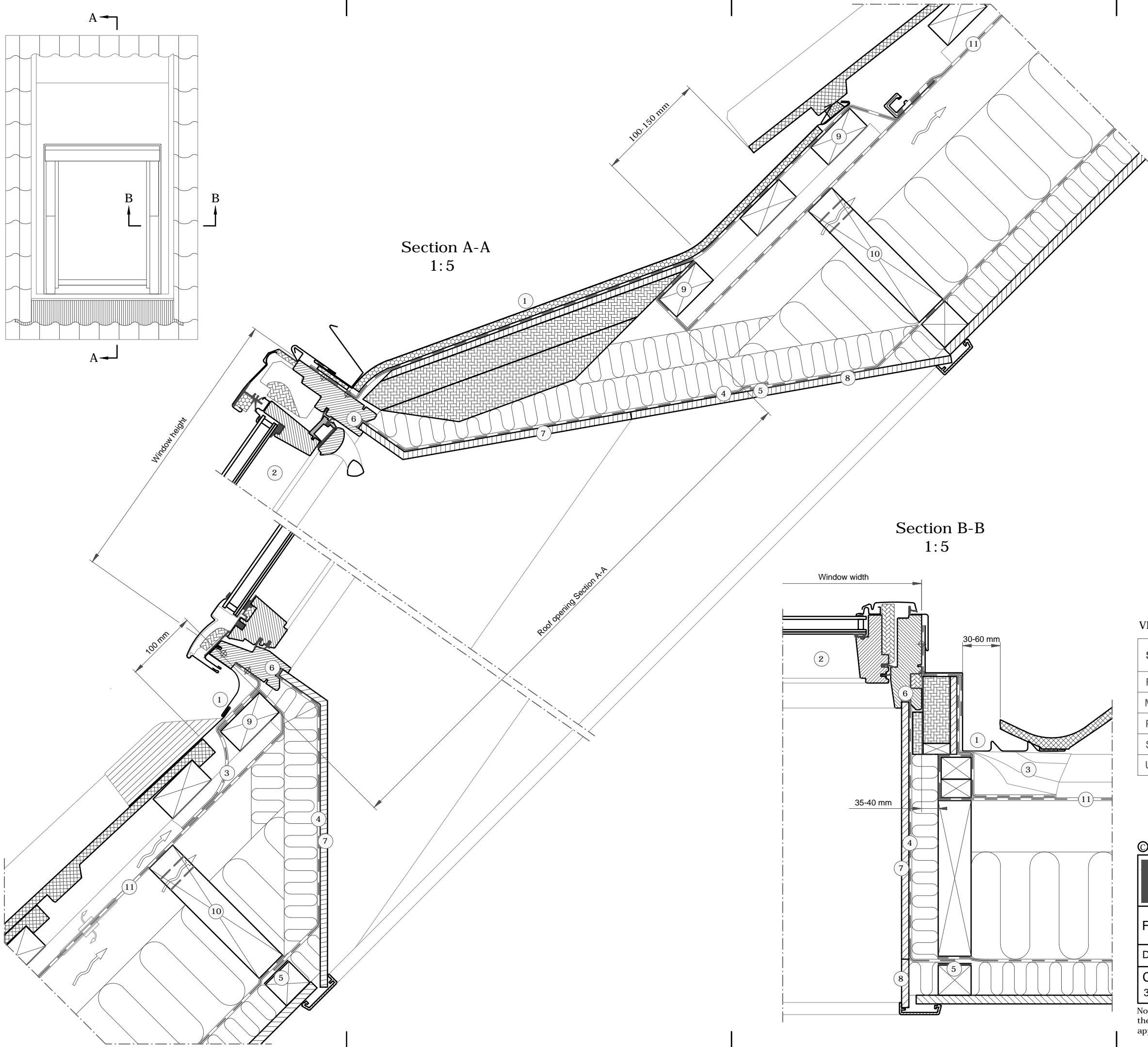
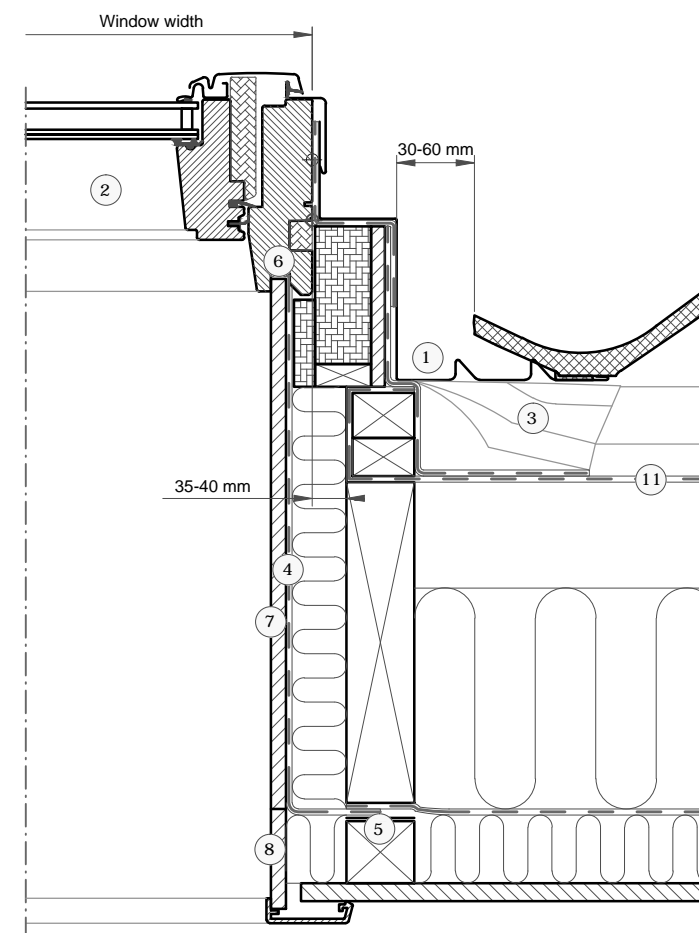


Section A-A  
1:5



Section B-B  
1:5



- 1 VELUX flashing (EAW 10°-75°)
- 2 VELUX window (GGL 15°-90°)
- 3 VELUX underfelt collar (BFX)
- 4 VELUX vapour barrier (BBX)
- 5 VELUX vapour barrier tape (BBX)
- 6 Gasket on BBX in window rebate
- 7 VELUX Lining (LS-)
- 8 VELUX Lining (LAI)
- 9 Installation batten (Non VELUX)
- 10 Trimmer where necessary (Non VELUX)
- 11 Felt/breather membrane (Non VELUX)

Roof covering:

Tiles  
Max 120 mm

VELUX Products:

GGL  
15°-90°

EAW  
10°-75°

BFX

BBX

LS-

LAI

VELUX window sizes:

Size	Width (mm)	Size	Height (mm)	Size	Roof opening (mm)
FK--	660	-K04	978	-K04	1360
MK--	780	-K06	1178	-K06	1630
PK--	942	-K08	1398	-K08	1930
SK--	1140	-K10	1600	-K10	2200
UK--	1340				

Roof opening Section A-A:

© VELUX GROUP ® VELUX, VELUX logo are registered trademarks

**VELUX**

File name: EAW-GGL-VAS-141-0616

Drawing no.:---	SCo: ---		
Create date: 30.05.2016	Rev. date:	Format: A3	Scale: 1:5

Note: When installing VELUX Roof Windows, flashings and installation products, the manufacturers instructions and current building and fire regulations, where applicable, must be met.